

Pro Mound Packing Clay

Installation and Maintenance





Requested by Name by Pro Players and Groundskeepers!

- Unique Blue Gumbo Clay
- Forms a solid subsurface that allows players to dig in
- Excellent footing that will not leave large holes





Two Great Options-- Loose Clay and Pre-Formed Bricks

- One pallet contains enough material to resurface and maintain:
 - Pitcher's mound
 - Batter's boxes
 - Catcher's station



Pro Mound bricks are sold in cubes of 312 pre-formed bricks shipped on a pallet.

Pro Mound loose clay is packaged in 50 lb. bags and shipped in pallets of 40 bags each and in bulk.



Easy to Install!

- Necessary Materials:
 - Shovel
 - Rake
 - Tamp
 - Water





Instructions: Loose Packing Clay



Remove top 4-6" of top soil from area around and in front of rubber in mound.

Also from batter's boxes and catcher's station.



Instructions: Loose Packing Clay

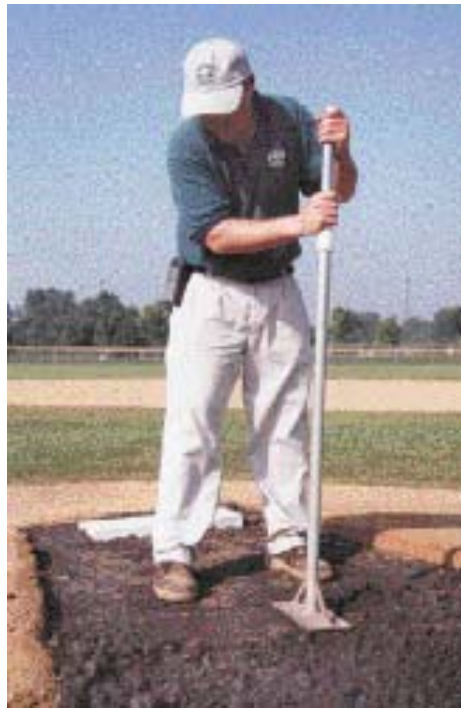


Lightly water prepped areas and allow to
soak in.

This helps form a bonding base with existing
soil.



Instructions: Loose Packing Clay



Apply 1" layer of Pro Mound to each area and tamp to compact.
Water and allow to soak in before repeating in 1" layers to within
1/2" of finished grade.



Instructions: Loose Packing Clay



Cover with skin coating of infield mix and tamp again.
Finish with a topdressing of Pro's Choice conditioner (Red,
Select or Rapid Dry).



Instructions: Pro Mound Bricks



Remove top 3-4" of top soil from area around and in front of rubber in mound.

Also from batter's boxes and catcher's station.



Instructions: Pro Mound Bricks



Line bricks up edge to edge, covering the excavated areas.



Instructions: Pro Mound Bricks



Water the areas and allow to soak into the bricks
for 1-2 hours.



Instructions: Pro Mound Bricks



Cover with skin coating of infield mix and tamp down.
Finish with a topdressing of Pro's Choice conditioner (Red,
Select or Rapid Dry).



Repair and Maintenance

- Lightly water mound, batter's boxes and catcher's station and cover with a tarp when not in use. If this is not possible, cover them with a light coating of Pro's Choice infield conditioner to maintain the correct moisture level.
- Sweep out any divots and use a rake to level off any high spots. Moisten the area to be repaired. Fill the divots with Pro Mound clay and tamp firmly. Cover with infield soil and tamp again.





Tips From the Pros

- Water thoroughly between layers. Applying dry mound clay into moist strengthens the bond between layers.
- Pro Mound has an infinite shelf life. Add water to dry material, allow to sit for 2-3 hours, and clay will be pliable and ready to install.
- Packing clay should not be mixed with other materials. Use the purest form of packing clay to ensure long lasting wear.





Tips From the Pros

- On a tight budget? Install your mound on a smaller base and expand to standard size over time. The original install will remain intact for years.
- For that finished mound look, lightly tamp infield dirt into the Pro Mound and rake Pro's Choice Select over the infield mix.





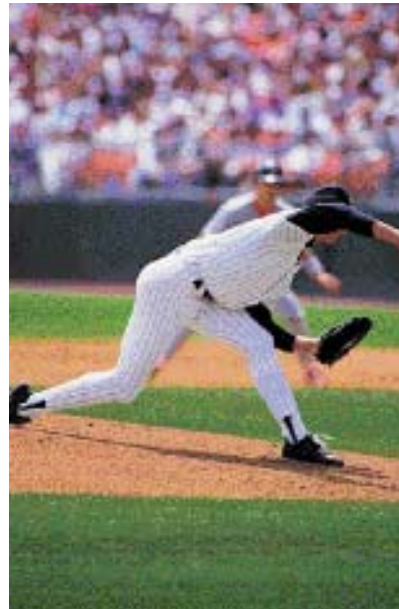
410 N. Michigan
Suite 400
Chicago, IL 60611

Email: proschoice@oildri.com

Ordering Info: 800-648-1166

Customer Service: 800-621-7191

Shipping Locations: Mounds, IL & Ripley, MS



BUILDINGbetter**INFIELDS**

since**1941**