

# PAM-12<sup>®</sup> Plus – Erosion Control



*The only polymer stabilizer that spreads uniformly - right out of the bag*



## PAM-12<sup>®</sup> Plus

**Easy to Use** Easy to store and handle. Offers uniform application with a visible tracer right out of the bag

**Saves Time and Money** Less labor – polymer is already “unwound” and distributed within the paper granules

**Avoid Rework** Stabilizes slopes by preventing soil loss and minimizes sediment production during storms

**Soil Types** Proven effective across a broad spectrum of soil types

**Apply Wet or Dry** Can be applied with hydro-seeding equipment or broadcast spreaders



AST<sup>®</sup> –

## Advanced Soil Technology™

AST<sup>®</sup> is a biodegradable polymer blend that acts like a net over your jobsite to hold soil, seed and fertilizer in place.

Pam-12<sup>®</sup> Plus is proven by ASTM D6459 Standards.

## PAM-12<sup>®</sup> Plus

ENCAP's PAM-12<sup>®</sup> Plus is a temporary soil stabilizer that can be used to reduce the erodibility of soils and improve the establishment of vegetation. The highly engineered paper granules are made from recycled paper and act as a visible tracer and a delivery system for ENCAP's Advanced Soil Technology™ polymers (AST<sup>®</sup>). PAM-12<sup>®</sup> Plus is a versatile product that can be dry applied using broadcast spreaders or wet applied with

hydro-seeding equipment. PAM-12<sup>®</sup> Plus can be applied as a stand-alone product or in combination with other mulch products.

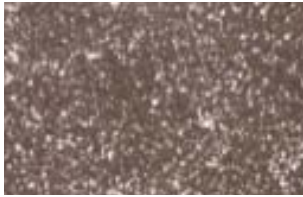
ENCAP's Advanced Soil Technology (AST<sup>®</sup>) is a proprietary blend of biodegradable polymers that act as soil stabilizers when activated by moisture. Each 50 lb bag contains over 1.0 lb of polymers. AST<sup>®</sup> is an effective stabilizer across a broad range of soil types.

## Application Rates

Slope	Lbs / Acre
No Slope up to 4:1	1000
4:1 – 3:1 Slope	1000 – 2000
3:1 – 2:1 Slope	2000 - 3000

### Dry Application Guidelines

Apply uniformly using the above rates



1000 lbs per acre



2000 lbs per acre

### Please Note:

- Application rates and methods may vary based on site conditions such as slope, soil type, physical state and chemical properties of the soil and time of year
- Application rates may vary based on desired visual appearance
- Slope interruption devices are recommended on slopes exceeding 40ft in length
- PAM-12<sup>®</sup> Plus granules are activated by natural or applied moisture
- It is recommended that seeding be completed prior to applying PAM-12<sup>®</sup> Plus. Seed needs to be in direct contact with the soil on a well prepared seed bed
- For more information visit our website at [www.encapro.com](http://www.encapro.com)

### Guaranteed Analysis

75.4%	Engineered Paper Fibers
1.5%	Polyacrylamide copolymer (solid)
2.1%	Polyacrylamide copolymer (emulsion)
1.0%	Biopolymer
20%	Gypsum (prilled calcium sulfate dihydrate)

## Hydraulic Application Guidelines

PAM-12<sup>®</sup> Plus granules are designed to visually ensure even distribution of polymer throughout the tank to dramatically reduce loading and mixing time. Mix per the following:

Mixing Instructions: Mix at a ratio of 1 gallon of water per pound of PAM-12<sup>®</sup> Plus.

Stand Alone: Apply uniformly using the above rates.

With cover mulch: Replace 1 lb of tackifier and 50 lbs of cover mulch with 50 lbs PAM-12<sup>®</sup> Plus.  
Adjust the ratio of PAM 12<sup>®</sup> Plus to cover mulch according to desired visual appearance and necessary degree of stabilization.



**ENCAP LLC**  
 3921 Algoma Road  
 Green Bay, WI 54311  
**877-405-5050**  
 920-406-9740 (fax)  
[www.encapro.com](http://www.encapro.com)

